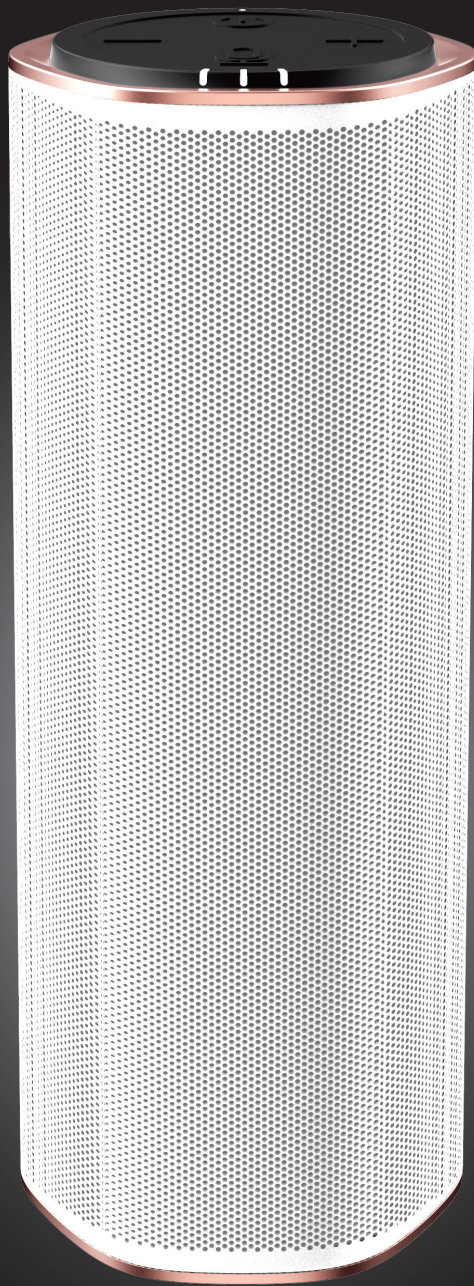


Cmni™

Portable Wireless
Multi-Room Speaker



USER EXPERIENCE GUIDE

expect
more™

Multi-room
multi-speakers



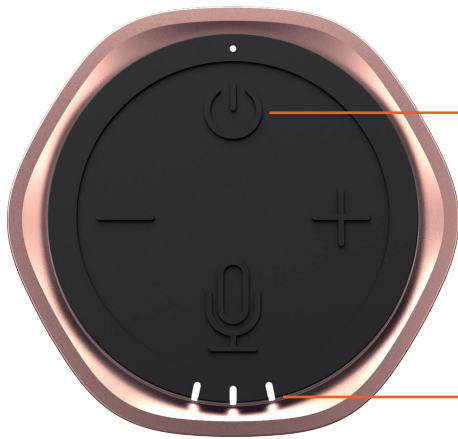
PLAY YOUR MUSIC

anywhere, any time

Enjoy seamless and uninterrupted music without tethering your phone. Creative Omni with WiFi lets you access millions of songs directly online, so your music goes on even when you get a call. Play the same song in every room, or different songs in different rooms! It also works with voice assistants to access a world of information. The portable and splashproof speaker accompanies you everywhere, even by the pool!

OVERVIEW

ARCHITECTURE & FEATURES



Large Buttons

- Easy-access power, volume, and mic controls
- Push-to-talk with Siri / Google Now

Status / Battery Indicators

- Shows current mode/status
- Shows battery level and alerts

	WIFI	AUX IN	SD	WIFI!	BOOT UP
					

WiFi Enabled

- Direct online music streaming
- Uninterrupted playback even when there's a call
- Multi-room setup for seamless music throughout the home
- Lossless hi-res audio – better than CD quality
- Long wireless range up to 30m (100ft)

IPX4 Splashproof

- Enjoy music everywhere, even by a pool or in the shower

Dual Orientation Audio

- 360° sound when upright
- Direct wide stereo imaging when placed horizontally

Stereo Duo

- Pair with another Creative Omni speaker wirelessly for true stereo sound



Bluetooth 4.2

- Wireless playback on the go
- Works with Siri and Google Now at a press of a button
- Hands-free calls

Built-in MP3/FLAC Player

- Play songs directly from a microSD card (up to 32GB)
- With easy access playback controls

High Performance Audio

- 2 custom-tuned 1.5" Neodymium drivers for vibrant mids and highs
- 2 passive radiators pump powerful bass

USB & AUX-In

- Charge via USB
- AUX-In port for easy connectivity to music source

Durable 8-hour Battery

- Bring the party with you wherever you go

KEY FEATURES

Seamless Uninterrupted Music

WiFi offers higher resolution audio and a longer wireless range up to 30m (100ft) than Bluetooth, giving you seamless lossless music around the house.

With WiFi onboard, you can listen to your favorite tracks anywhere in your home. Music is streamed directly online without tethering to a phone – so the music goes on even when there's a call, or after you leave the house. Get uninterrupted access to millions of songs from Spotify, Tidal, Napster, or iHeartRadio.

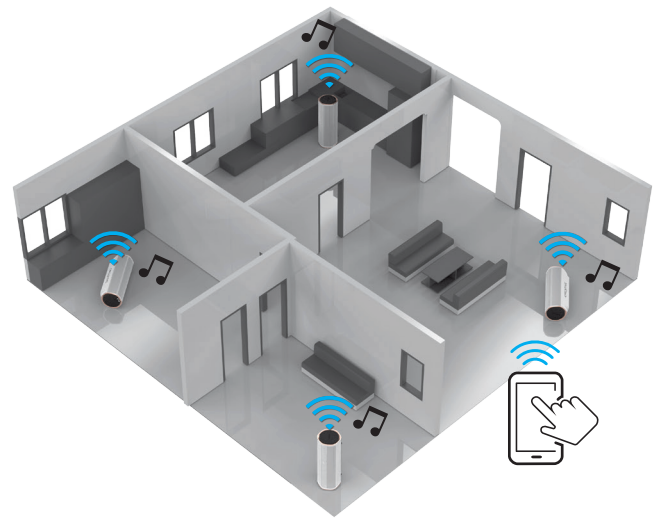


Multi-Room, Multi-User

When you connect multiple Omni speakers around the home, you can choose to play the same song in every room, or different songs in each room.

Whether you're streaming music to one speaker, a stereo pair, or multiple speakers, you can control them without moving a step using the Sound Blaster InterConnect mobile app.

Plus, every speaker can be controlled by more than one user, so you and your family can listen to your favorite tracks no matter which room you go to.



Smart Speaker

Talk to Siri or Google Now voice assistant with a single press of a button! Simply connect your phone via Bluetooth, and you can send emails, get recipes or order a pizza using just your voice. A discreet omnidirectional microphone inside the Omni ensures your voice is heard clearly. The Omni can also be used for hands-free calls.



Splashproof

Hold a pool party or have bathroom karaoke sessions everyday with the IPX4-certified splashproof Omni.



High Performance Design

The Omni is specially designed with 4 high-performance drivers – two custom-tuned 1.5" Neodymium drivers and two passive radiators. The powerful audio and enhanced bass response ensures that you are always surrounded by loud and vibrant music.

The Omni also features a flexible dual orientation design that produces 360° sound when upright and great direct stereo imaging when you lay it horizontally.



Music on the Go

Take your music everywhere with you. Play music outdoors wirelessly using Bluetooth 4.2 or directly from a microSD card with the integrated music player. The portable Omni with a durable battery lets you blast your favorite tunes up to 8 hours long!



SPECIFICATIONS

Dimensions (H x W x D)	71.1 x 200.8 x 68.5 mm (2.78 x 7.9 x 2.7")
Weight	460 g (1.0 lbs)
Power Output	2 x 3W – 12 W Peak
Drivers	2 x 1.5" Neodymium Drivers 2 x Passive Radiators
Frequency Response	80 Hz ~ 20 kHz
Maximum SPL	90 dB
Microphone	Discreet omnidirectional
Wi-Fi	802.11 a/b/g/n 2.4 GHz
Bluetooth	
• Version	Bluetooth 4.2
• Profile	AVRCP, A2DP, HFP
• Supported Codecs	SBC
• Operating Frequency	2.4 GHz
• Operating Range	Up to 10 m (30 ft)*
AUX-in	3.5mm stereo jack
microSD Slot	Supports MP3, WMA, WAV, FLAC (up to 32 GB)
Battery Life	8 hours (Bluetooth)
Charging	USB Micro-B, 5V 850mA
Splashproof	IPX4-certified

* Measured in open space. Walls and structures may affect range of device.

SYSTEM REQUIREMENTS

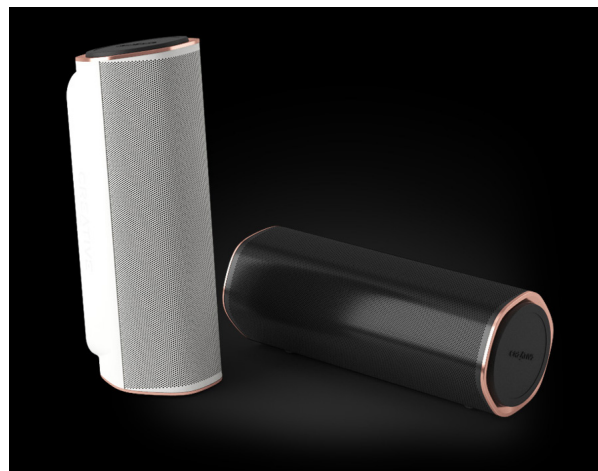
iOS

- iPhone®/iPad® running iOS 8.0 or later sound

Android™

- Android 4.0 or later

Available in Black and White



ENHANCING & CUSTOMIZING

Sound Blaster InterConnect app

Available for iOS and Android, the Sound Blaster InterConnect lets you control and play music wirelessly on multiple Creative speakers in multiple rooms over WiFi. Enjoy music from cloud music service providers and Internet radios without connecting your phone to the speaker. You can also browse and play your favorite music on the connected microSD card.



Dashboard

An overview of all the connected Omni speakers. View the current playing song and volume settings.

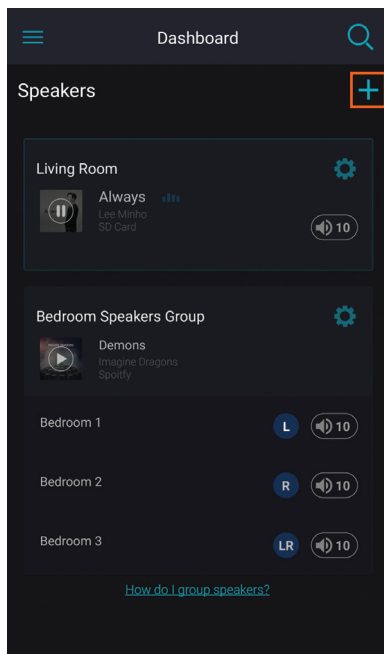
The screenshot shows the app's dashboard with the following elements and annotations:

- Open/collapse side menu for quick access to:** Points to the hamburger menu icon in the top left corner.
- Search for a connected speaker:** Points to the magnifying glass search icon in the top right corner.
- Add speakers:** Points to the plus sign icon in the top right corner of the "Speakers" section.
- Individual speaker settings:** Points to the gear icon in the top right corner of the "Living Room" speaker card.
- Individual speaker volume:** Points to the volume slider icon in the bottom right corner of the "Living Room" speaker card.
- Grouped speakers settings:** Points to the gear icon in the top right corner of the "Bedroom Speakers Group" card.
- Play/pause current song:** Points to the play/pause button icon in the top left corner of the "Living Room" speaker card.

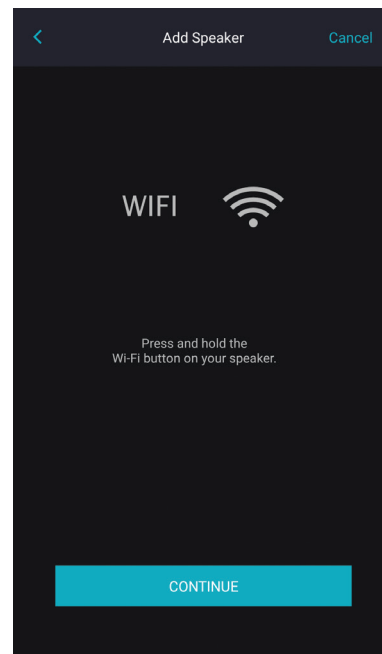
The dashboard displays two main sections: "Speakers" and "Bedroom Speakers Group". The "Speakers" section shows a "Living Room" speaker with the song "Always" by Lee Minho playing from an SD Card. The "Bedroom Speakers Group" section shows a "Bedroom 1" speaker with the song "Demons" by Imagine Dragons playing from Spotify. Below the "Bedroom 1" speaker, there are two more speakers: "Bedroom 2" and "Bedroom 3". At the bottom of the dashboard, there is a link that says "How do I group speakers?".

Speaker

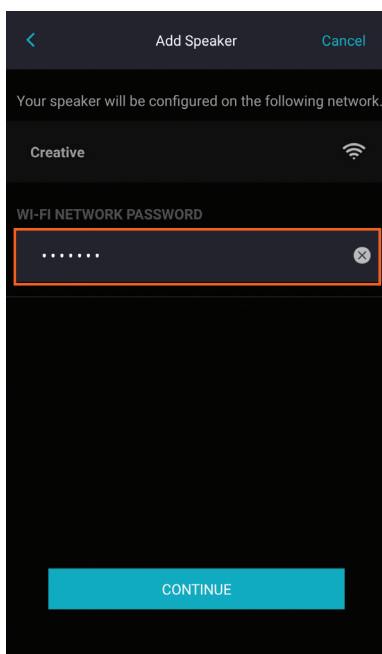
Connect your Creative Omni speaker to your phone and WiFi network.



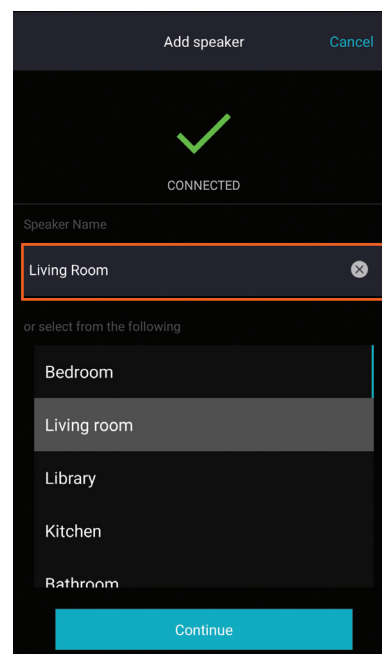
1. Add speaker from Dashboard.



2. Press and hold the **WIFI** button on your Omni speaker.



3. Enter the WiFi network password, if necessary.



4. Wait for your speaker to be connected. Once connected, you can give your speaker a name for easy reference.

NOTE: Make sure your phone/tablet is connected to a 2.4GHz WiFi connection.

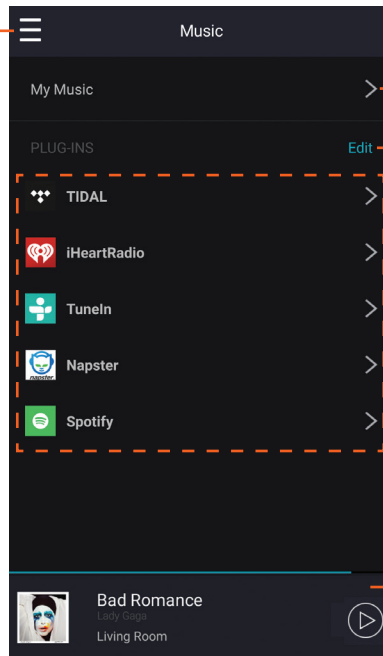
Music

View songs on your phone or add plug-ins to your favorite music apps like Spotify, iHeartRadio and Tidal.

Access the **Music** tab from the side menu.

Open/collapse side menu
for quick access to:

- Dashboard
- Favorite songs
- Tools



View songs /playlists on your phone

Add/edit music app plug-ins

Music apps to access songs
directly online

Now playing

- Play/pause track
- View playback progress
- Current playing speaker

Tap the **Now Playing** section to maximize and view more playback settings.

