

# APC Back-UPS™ 700



Part Number: BX700U-GR

## Battery Backup Power and Surge Protection for Computers and Electronics

The Back-UPS 700 from APC by Schneider Electric powers your computer and electronic equipment during storms and outages. The BX700U-GR features Automatic Voltage Regulation (AVR). This feature instantly adjusts high and low voltage fluctuations to safe levels for connected electronics, saving battery power for when you need it most during storms and outages. Equipped with 4 Schuko sockets, the 700 keeps your desktop computer, monitor or other critical devices (router, modem, television, etc.) running when the power goes out. Specifically designed for electronic equipment in harsh power environments, the Back-UPS 700 maximizes productivity and work efficiency while providing critical power during emergencies.

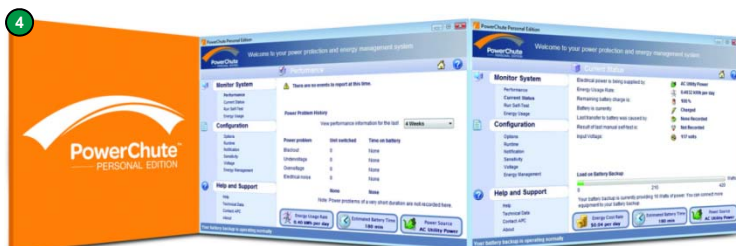
### Product applications

- PC and peripherals
- Networking equipment (router, modem)
- Game consoles
- LCD / LED / OLED televisions
- NAS (Network Attached Storage)



### Product Features

- 1 LED Indicator and Audible Alarms**  
Quickly understand the unit and power status through visual and audible indicators.
- 2 Automatic Voltage Regulation (AVR)**  
"Double Boost and Single Trim" AVR instantly corrects voltage fluctuations without using the battery, allowing you to work indefinitely through sustained voltage increases and decreases.
- 3 4 Battery Backup and Surge Protected Outlets**  
Keep critical electronic equipment running when the power goes out or fluctuates at dangerous levels, so you can protect your work and save your data.
- 4 USB Connectivity and PowerChute Software**  
Use your computer to access additional power protection and management features:
  - Preserves your work, shuts down system during outages
  - Restarts your system, minimizing work disruptions
  - Enables customization of your Back-UPS settings
  - Monitors and displays power and battery status
- 5 Push Button Circuit Breaker**  
Provides for easy recovery from circuit overloads and protects your fuse box and electronics from electrical damage.
- 6 Automatic Diagnostic Testing**  
Periodic battery self-test ensures early detection of a battery that needs to be replaced, ensuring your unit is ready when you need it.
- 7 2 Yr Warranty**  
APC offers a 2 year warranty with free technical phone and online support, providing customer peace of mind.
- 8 Easy to use "one step" battery connector.**



**APC™**  
by Schneider Electric

## Back-UPS 700 Specifications

|   |  |
|---|--|
| Model Number                                | BX700U-GR  |
| <b>Output</b>                               |  |
| Output Capacity                             | 700 VA / 390 Watts   |
| Output Voltage / Frequency (On utility)     | 230V / 50/60 Hz +/-1 Hz  |
| Output Voltage / Frequency (On battery)     | 230V +/-8%, 50 or 60 Hz +/-1 Hz (auto-sensing)                             |
| Output Connections                          | 4 Schuko sockets<br>(all with battery backup and surge protection)         |
| Waveform Type                               | Stepped Approximation to Sine Wave   |
| <b>Input</b>                                |  |
| Input Voltage / Frequency                   | 230V / 50/60 Hz +/-3Hz   |
| Brownout transfer / Over-voltage transfer   | 140 VAC / 300 VAC  |
| Input Connection                            | Schuko CEE 7/7P  |
| <b>Surge Protection</b>                     |  |
| AC Power Surge Protection                   | All outlets  |
| <b>Physical</b>                             |  |
| Unit Dimensions (H x W x D)                 | 100 x 115 x 256 mm   |
| Unit Weight                                 | 6.0 Kg   |
| Shipping Dimensions (H x W x D)             | 275 x 295 x 340 mm   |
| Shipping Weight                             | 6.4 Kg   |
| Color                                       | Black  |
| UPC Code                                    | 731304315780   |
| <b>Battery</b>                              |  |
| Battery Type                                | Maintenance-free, sealed lead-acid battery, leak proof                     |
| Battery Size                                | 12 volt, 7.2 Ah  |
| Recharge time to 90%                        | 6 hours  |
| <b>Management</b>                           |  |
| Alarms                                      | Visual (LED) and audible alarms  |
| Adjustable Sensitivity and Transfer Voltage | Low, Medium (default), High  |
| Auto-Shutdown Software                      | PowerChute Personal Edition<br>(Via USB interface. USB cable not included) |

**APC by Schneider Electric**

132 Fairgrounds Rd  
West Kingston, RI 02892

[www.apc.com](http://www.apc.com)

